

# Implementation of IoT of an Electric Infant Warmer to Prevent Hypothermia in Newborns

Ekha Rifki Fauzi <sup>1\*</sup>, Angger Maharesi <sup>2</sup>, Noor Alis Setiyadi <sup>3</sup>

<sup>1</sup>Department of Electro-medical Engineering Technology, Universitas PGRI Yogyakarta, Yogyakarta, Indonesia

<sup>2</sup>Department of Electro-medical Engineering RSUD Prambanan, Yogyakarta, Indonesia

<sup>3</sup>Department of Public Health, Universitas Muhammadiyah Surakarta, Indonesia

Email: <sup>1</sup> ekharifkifauzi@gmail.com, <sup>2</sup> aananggermaharesi92@gmail.com, <sup>3</sup> noor.setiyadi@ums.ac.id

\*Corresponding Author

**Abstract**—Hypothermia is a drop in body temperature below 36.5°C in newborns. It results in an internal distribution of body heat from the nucleus to the periphery, followed by heat loss greater than metabolic production. Hypothermia is one of the factors predisposing to metabolic disorders, intracranial hemorrhage, respiratory distress, and Necrotizing enterocolitis. Hypothermia problems can be treated with infant warmers. Thus, the need for an infant warmer is considered to improve survival in newborns. This study aims to improve the accuracy of temperature monitoring, increase security, and enable remote monitoring. The temperature sensor of the device is calibrated with comparable devices such as Incubator Analyzer and Thermo hygrometer while the SpO<sub>2</sub> sensor is calibrated with Spotlight SpO<sub>2</sub> Functional Tester and Thermo hygrometer. Achievement and validation of temperature and oxygen saturation use a calibration comparison tool. The results of the temperature sensor measurements, including air temperature and skin sensor temperature, namely: air temperature error tolerance  $\leq 2^\circ\text{C}$  and skin sensor temperature error tolerance  $\pm 0.5^\circ\text{C}$ . All two indicators have the same standard deviation value of  $\pm 0.49$ . The SpO<sub>2</sub> indicator reached an error tolerance value of  $\pm 1\%$  O<sub>2</sub> with a standard deviation value of  $\pm 0.6-0.9$  from six trials. Then the pulse rate indicator obtained an error tolerance of  $\pm 5\%$  with a standard deviation value of  $\pm 0.6$ . The smart infant warmer tool provides benefits to avoid excessive heat from the heater and minimize low temperatures that cause hypothermia through the Internet of Things technology. Furthermore, this research can be improved with machine learning technology to increase efficiency and effectiveness in patient treatment.

**Keywords**—Infant Warmer; IoT; Hypothermia.

## I. INTRODUCTION

Hypothermia has been associated with increased mortality and morbidity in newborns [1][2]. Particularly, neonatal hypothermia is widely recognized to be one of the biggest causes of mortality and morbidity, especially among the world's poorest newborns. The prevalence of hypothermia had a percentage between 11%-92% in the community, and 8%-85% in hospitals, especially in developing countries. In another study from India, hypothermia cases reached 37% of moderate hypothermia in newborns in the Neonatal Intensive Care Unit [3][4]. This is due to the baby's body and skin temperature which decreases between 0.1°C-0.3°C per minute after the baby is born. This incidence can be prevented by using an infant warmer as the first treatment to maintain body temperature [5][6].

Hypothermia easily occurs in newborns because they cannot regulate their body temperature, unlike adults. The risk is greater, the more premature, and the smaller the newborns. Premature babies will easily experience hypothermia due to environmental factors (low delivery room temperature) and physical factors (poor vasomotor control, immature skin with minimal stratum corneum, larger skin surface area to body volume ratios, less subcutaneous fat content, and lack of non-shivering thermogenesis) [7][8]. The consequences of hypothermia can cause a variety of diseases, including compromised organ function, respiratory distress, and increased infection risk. [9][10]. Moreover, neonatal hypothermia is often defined as a body temperature  $< 36^\circ\text{C}$  and it has been associated with high mortality among premature infants [11].

Newborns have a high risk of various health problems because newborns' bodies are still vulnerable so they need medical devices to support their first life. The medical device is an infant warmer that can provide a living environment for newborns like in the womb. Indeed, an infant warmer is a life-saving & support equipment used to provide the temperature environment needed by the body of newborns [12].

Infant warmers have experienced developments in the field of technology. Several studies had created innovations for infant warmers. One of them was an infant warmer with phototherapy that used Arduino Uno, LCD, LM35 temperature sensor, and thermistor sensor with a temperature setting of 32°C to 37°C [13]. Additionally, another study also embedded a PID system with a trial and error using DHT 22 sensor & LM 35 sensor as a skin sensor [14]. Then, there was a smart infant warmer using a PID Controller and embedding a DHT 11 sensor as a temperature sensor and an LM 35 sensor as a skin sensor [15]. Furthermore, there was a recent study that created a smart infant warmer using LM 35 as a temperature sensor, DS18B20 as a skin temperature sensor, and a PID control system to stabilize the temperature [16]. The drawback of these studies is that they are still manual for patient monitoring. Moreover, this requires a tool that can monitor real-time and remote on the patient's body temperature indicator.

Based on the above identification results, the authors have developed an intelligent infant warmer with IoT (Internet of Things). This makes it easier for medical personnel to monitor patients. The tool can monitor newborns in real time through gadgets. It monitors not only the patient's body



temperature but also the oxygen saturation level. This is what distinguishes it from previous infant warmer developments. IoT technology allows remote and real-time monitoring. IoT can also improve the patient safety system which is better than the prevention segment. This technology can be a good choice for the shortcomings of previous developments. The purpose of this study is to create a smart infant warmer in monitoring temperature and oxygen saturation levels in newborns in real-time. This monitoring detects changes in the patient's body temperature and oxygen saturation levels. This can improve the intervention schedule and reduce the potential risk of such changes to the patient's condition. This tool uses a SpO<sub>2</sub> sensor as an oxygen saturation level sensor, a skin sensor as a body temperature sensor, and OLED as a digital display. SpO<sub>2</sub> sensor aims to let nurses know the oxygen saturation level of newborns and the skin sensor aims to know the newborn's body temperature. The contribution of this development is to improve the accuracy rate, increase the use of tools, and remote monitoring of patient capabilities by medical personnel.

## II. MATERIALS AND METHODS

### A. Experimental Setup

This research used calculations of the temperature's body in the range of 35°C-37°C by taking calculations at experiments taken 6 times for data collection. This experiment measured the room temperature and relative humidity where the measurement results get a temperature of (26.0 ± 0.7) °C and a relative humidity (of 68 ± 4) %. This experiment checks the physical condition and function of the tool components first with the results of the inspection in good condition. The experiment was conducted on one subject only with repetition for one hour of the experiment.

#### 1) Material and Tools

This study used an ESP32 microcontroller for data processing. This research used the DHT11 sensor as the temperature's room reading and the DS18B20 sensor was used as the newborn's skin temperature reading by using a 2500-watt power heater element. This study also used LCD/OLED to display all parameters in infant warmer devices. Moreover, the SpO<sub>2</sub> sensor measures the oxygen saturation level of the newborns. The use of ESP32 has embedded WIFI to support the IoT program. While the DHT11 and DS18B20 Sensors have a better level of accuracy than other temperature sensors [17][18].

#### 2) Experiment

The sensors were compared with a calibrator analyzer with 6 data retrieval. This study used the MK-015 calibration method with reference MK No.026, Decree of the Director General of Health Services. Indonesian Ministry of Health Number: HK.02.02/V/0412/2020 for the DS18B20 sensor. Calibration was carried out under conditions of room temperature (26.0 ± 0.7) °C and relative humidity (68 ± 4) %. The calibration apparatus used a FLUKE Brand Incubator Analyzer with certification number 3909/AMK/III/2022 and a Thermo hygrometer with certification number 4706/AMK/IV/2023.

The SpO<sub>2</sub> calibration used the MK-011 method with references MK No. 041, Decree of the Director General of

Health Services, Indonesian Ministry of Health Number: HK.02.02/V/0412/2020, and Medical Equipment Quality Assurance, Fluke Biomedical. Calibration was carried out under conditions of room temperature (26.7 ± 0.3) °C and relative humidity (68 ± 4) %. The calibration comparison tool used the Spotlight SpO<sub>2</sub> Functional Tester Brand FLUKE with certification number CAL/031/3691015-02/16/21.

#### 3) Statistical Analysis

The statistical analysis used a 95% confidence level with a coverage factor of k= 2. Furthermore, each SpO<sub>2</sub> reading was corrected by the addition of its correction value.

#### 4) Ethical Clearance

This study has received ethical clearance from the Faculty of Medicine, Universitas Muhammadiyah Surakarta with number 5013/B.2/KEPK-FKUMS/VII/202.3.

### B. Diagram Block

In the diagram block as shown in Fig. 1, it is explained that; in the first setting, the device is checked for internet connection through the ESP32 webserver IP connected to WIFI. Then, the user sets the lower (35°C) and upper (37°C) temperatures of the infant warmer with the keypad. The results of the settings are displayed on the LCD connected to the Arduino Uno. Next, the heater is turned on by placing the DS18B20 sensor on the patient's skin to detect the patient's body temperature.

The SpO<sub>2</sub> sensor detects the patient's oxygen saturation level by embedding the sensor in the patient's finger. The DHT11 sensor is used to measure room temperature and air humidity. The data from the sensor is processed and sent via ESP32 with its Webserver IP connection to be displayed to health workers from gadgets. Health workers can monitor patients by remote control.

This infant warmer tool is designed to turn off the heater if the temperature has exceeded the upper limit of its user settings. This can improve work efficiency and effectiveness for health workers during patient care.

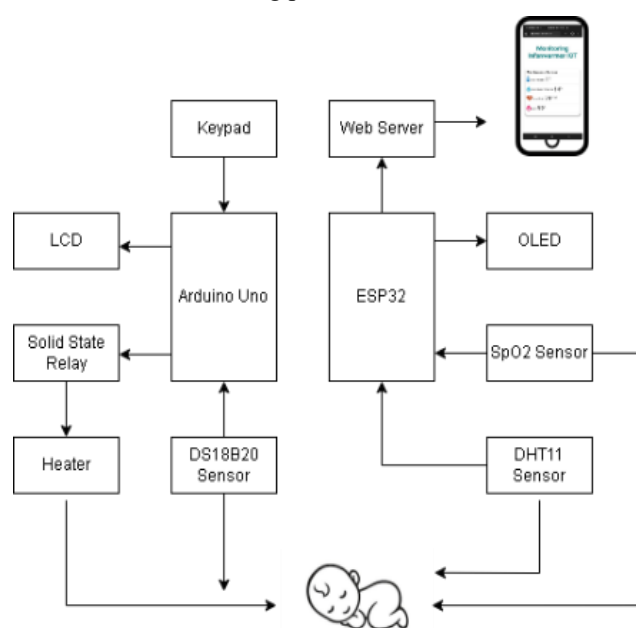


Fig. 1. Diagram block

### C. The Flow Chart

The flowchart which is shown in Fig. 2 explains that; 1) the infant warmer must press the push button to become powered on; 2) After that, the infant warmer is connected to WIFI via SSID and Password; 3) Then, component initialization occurs and proceeds to activate the SpO<sub>2</sub> and DS18B20 sensor in measuring the patient's condition indicators of oxygen saturation and body temperature; 4) Next, the sensor measurement data is sent via webserver IP to the user's gadget and the results are displayed by OLED in the infant warmer; 5) If the infant warmer has no internet connection, then there is no component initialization to activate the sensor and the device cannot measure the patient's oxygen saturation and body temperature.

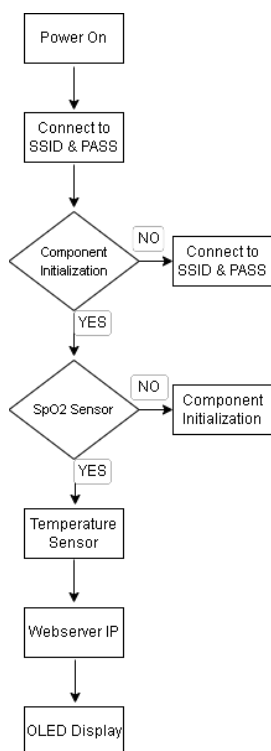


Fig. 2. The flowchart of IoT monitor

### III. RESULTS

The infant warmer uses two main sensors to measure indicators of the patient's body condition. The sensors are the SpO<sub>2</sub> sensor and the body temperature sensor through its placement on the patient's skin. This tool is embedded with IoT (Internet of Things) technology so that it can work remotely. This IoT technology must be connected to internet signals both infant warmers and user gadgets. Implementation of IoT can facilitate user work in the efficiency and effectiveness of health services. This tool can improve patient safety, and remote monitoring, and increase healthcare professionals' ability to supervise patients. The microcontroller on the infant warmer can transmit and process sensor measurement data to the user via its Webserver IP. Furthermore, all indicators are displayed on the LCD to set the temperature from the keypad and OLED displays the results of temperature indicators and oxygen saturation data from the sensor. Then this tool can be operated with electric power up to 200 watts to support the heater. The heater is also equipped with an insulator so that users are safe

from static electricity from the infant warmer. This tool with IoT technology can increase the accuracy of temperature monitoring, increase security, and enable remote monitoring. The infant warmer can be seen in Fig. 3.



Fig. 3. Infant warmer

#### 1) The Listing Program for Infant Warmer Device

1. Sensor and WIFI Initialization Program
2. OLED Initialization Program with I2C
3. SpO<sub>2</sub> and DHT11 Sensor Installation Reading Program to Web Server
4. Sensor Reading Results Appearance on OLED
5. Program Appearance on Web Server SpO<sub>2</sub>, Heart Rate, Temperature, and Humidity
6. LCD, DS18b20, Keypad Initialization Program
7. Keypad to SSR & DS18B20 Sensor Initialization Program
8. Setup Program on Setting & Differential Mode Selection
9. Temperature & Differential Setting and Display to LCD

#### 2) The Measurement Result

Sensor measurements were taken to ensure the device was fit for use. The device's sensors measure the patient's body temperature, oxygen saturation, and pulse rate. This measurement data is sent to the user with IoT technology via Webserver IP to the user's gadget. This is remote monitoring that can make it easier for users to monitor the patient's body condition in real time. If the heater temperature has increased for the patient, the infant warmer responds by turning off the heater according to the settings of the user. The measurement results are also compared with the calibrator. Each indicator is calibrated with its respective calibrator. This can improve the system accuracy of measurement results, improve patient safety, and improve the expertise of health workers to supervise patients.

Table I states that the results of six measurements reached the highest correction value of two numbers. Standard measurement 70 obtained 68 in the sensor measurement with a correction value of two and the highest Standard deviation value of  $\pm 0.9$ . While the standard measurements of 90 and 95 attained the same value on the sensor measurement with a correction value and relative error of zero. Standard measurements less than 90 obtained a correction difference of one to two numbers with the highest relative error of three percent.

Table II states that the results of four measurements reached the highest correction value of one number. Standard settings 30, 60, and 120 obtained the same sensor reading value as the standard setting value and the correction & relative error value was zero. While the standard setting of 180 attained a sensor reading value of 179 with a correction value and relative error worth one point. Standard settings less than 180 reached the same correction value and relative error of zero point.

Table III states that the results of six times setting the temperature standard of 36°C for the patient's body temperature reached a sensor reading value of 35.65°C with a correction value of -0.23 and a tolerance of approximately 0.5°C. While setting the 36°C standard for room temperature water, the sensor reading value obtained 35.37°C with a correction value of -0.51 tolerance of less than equal to 2°C.

#### IV. DISCUSSION

In the measurement results, it was found that the pulse rate reached an error value of around 0.6 with a tolerance of 5% or 5 BPM. According to Matthew E. Wieler [19], the results of his research obtained an error value of around 0.53%, while other studies also attained an error value of 0.37% [20], 0.87% [21] <1.702% [22], 2.702% [23], and 3.23% [24]. The allowable error value for patient care was less than 5%.

The SpO<sub>2</sub> sensor measurement results reached the highest correction result of only two and the highest relative error of three percent. Based on M. Syahrul Azam [25], the results of his research obtained the error value of the highest SpO<sub>2</sub> sensor of 0.68% and the smallest 0.17%. While other similar

studies stated the error value in the range of 0.0123% [26], 1% [27], >3% [28], 0.38% [29], 0.81% [30], 1% [31], and other study revealed deviation value approximately 1.62% [32].

In the measurement results, it was found that the skin sensor temperature was read at 35.65°C with a correction error of 0.23 from the indicator temperature. Then the error tolerance reached approximately 0.5°C. This also happened in the previous study, the difference in temperature sensor measurements was only about 0.13-0.182°C with the largest error of the system reaching 0.517% [33] and other studies achieved an error rate of only 0.28% [25]. Then based on other research, the results obtained for the error value were also less than 0.5°C [34]–[36]. The error value obtained from the DS18B20 sensor measurement was about 1% [37][38] or 0.3°C. The previous research also stated the results of the error value which obtained an error value of around 0.15 - 0.29°C [39], 1.02% [21], 0.06% [16], 0.37% [36], and 2.18% [23]. These studies, in measuring temperature, calibrate with the same Incubator Analyzer tool used in this study.

Previous research used a PID control infant warmer system to improve temperature stability performance. The experiment showed a temperature setting of 35°C with an error of 0% [16]. Then another study also obtained a comparison of the DS18B20 sensor with a thermometer, the difference had an average of 0.3°C and 1% deviation. So that this is still within the standard limits [37]. Furthermore, infant warmers that used fuzzy logic obtained a level of precision for temperature monitors with a temperature difference with an average thermometer error of 1.07% with an accuracy rate of 98.93% [40].

TABLE I. OXYGEN SATURATION RESULTS

Oxygen Saturation Performance						
Parameters	Setting Standard	Average Tool Reading (%)	Correction	Relative Error (%)	Tolerance	Standard deviation
SpO <sub>2</sub> (%)	70	68	2	3	± 1% O <sub>2</sub>	± 0.9
	75	73	2	3		± 0.6
	80	78	2	3		± 0.7
	85	84	1	1		± 0.6
	90	90	0	0		± 0.7
	95	95	0	0		± 0.6

TABLE II. PULSE RATE RESULTS

Oxygen Saturation Performance						
Parameters	Setting Standard	Average Tool Reading (BPM)	Correction	Relative Error (%)	Tolerance	Standard deviation
Pulse Rate (BPM)	30	30	0	0	± 5% ±5 BPM	± 0.6
	60	60	0	0		± 0.6
	120	120	0	0		± 0.6
	180	179	1	1		± 0.6

TABLE III. TEMPERATURE RESULTS

Temperature Performance						
Parameters	Setting Standard	Average Tool Reading (%)	Correction	Relative Error (%)	Tolerance	Standard deviation
Air Temperature	36	35.88	35.37	-0.51	≤ 2 (°C)	±0.49 (°C)
Skin Sensor Temperature	36	35.88	35.65	-0.23	±0.5 (°C)	±0.49 (°C)
	36	35.88	35.65	-0.23	±0.5 (°C)	±0.49 (°C)
	36	35.88	35.65	-0.23	±0.5 (°C)	±0.49 (°C)
	36	35.88	35.65	-0.23	±0.5 (°C)	±0.49 (°C)
	36	35.88	35.65	-0.23	±0.5 (°C)	±0.49 (°C)
	36	35.88	35.65	-0.23	±0.5 (°C)	±0.49 (°C)

Another similar infant warmer using fuzzy logic could provide a temperature with an error value of 1.36% with a tolerance limit of 0.1°C [41]. According to Shaib et al. [42], temperature monitoring still used a Wireless Computer Network where the tool is channeled through Xbee Pro. The weakness of this tool is that the data process and display process still use a computer. It was also made by Azkiyak et al. proposing a temperature and humidity monitoring with ATmega328 Microcontroller, the distribution process still used HC-12 wireless [43]. Then Hannouch et al. also proposed monitoring of temperature and humidity in infant warmers through wireless equipped nurse-call where the delivery process still used HC-11 and the results were displayed on a computer [44]. According to Shabaan, his research also used the internet, and the data was displayed through Character LCD for temperature and humidity monitoring [45].

According to Sendra et al. [46], An infant incubator was developed with DHT11, Wemos D1, Arduino Mega, and FSR-402 sensors. Then the device used a LoRa module and an NXP PN532. There was also an infant warmer developed with an Arduino Uno system, ESP8266 WIFI module, DHT11/DHT22 sensor, and Thingspeak Platform to store the data [47]. Furthermore, the development of an infant warmer used an alarm, SN-Pulse, and Arduino Uno system [48], while Ashim [49] only monitored the incubator temperature with an LM-35 sensor and Raspberry Pi 2+ ESP8266 WIFI module.

The development of Infant warmers had also been developed with the use of MQ5 to monitor temperature, humidity, and SpO<sub>2</sub> [50]. Furthermore, the development of the baby incubator had been improved its working system remotely via a web-based graphical user interface [51]. There was a similar development using a web application for remote monitoring and control with the inclusion of a DHT11 sensor, RTC DS130 module, and Arduino Mega 2560 [52]. The research also used a remote system through a web application by embedding the DHT22 sensor, DS18B20, and SIM900A GSM module [53]. Some infant warmer developments used a wireless system [54][55] for monitoring temperature, humidity, and SpO<sub>2</sub> with LabVIEW [56]–[58]. As well as infant warmers used Bluetooth communication systems through an Android smartphone [59].

The use of IoT technology allows medical consultations and follow-ups of its patients with the system in remote and isolated places, or with limited mobility [60]. Then, IoT technology provides real-time monitoring, cloud-related health analysis, and machine learning [61]. IoT has also increased global attention [62] IoT has become a key function for the prediction, prevention, and monitoring of infectious and communicable diseases [63]. IoT is one of the intelligent services and applications that can be linked, such as behavior recognition, disease diagnosis, and smart assistance [64]. Based on the explanation above, the implementation of IoT embedded in Infant Warmer is a smart assistance to help health workers in monitoring newborn patients.

## V. CONCLUSION

The smart infant warmer is aimed to improve the accuracy of temperature monitoring, increase security, and enable remote monitoring. The infant warmer had earned to apply IoT Technology and the experiment also reached appropriate results. The skin temperature sensor obtained a standard deviation of around  $\pm 0.49$ , a tolerance value of  $\pm 0.5^\circ\text{C}$ , and a correction value of  $-0.23$  points. According to the SpO<sub>2</sub> sensor, the value reached a standard deviation around  $\pm 0.6$ – $0.9$  with a tolerance value of  $\pm 1\%\text{O}_2$  and a correction value of approximately 1–2 points. Then pulse rate value attained a standard deviation of  $\pm 0.6$  with a tolerance value of  $\pm 5\%$  and a correction value around 0–1 point. The calibration used an Incubator Analyzer and Thermo hygrometer for the temperature sensor, but Spotlight SpO<sub>2</sub> Functional Tester was used by the SpO<sub>2</sub> sensor.

## Acknowledgment

The authors thank the LPPM Universitas PGRI Yogyakarta for funding this study with register number 187/BAP-LPPM/X/2022. Then the authors thank also the colleagues of the Faculty of Science & Technology of Universitas PGRI Yogyakarta.

## REFERENCES

- [1] J. Patodia *et al.*, “Reducing admission hypothermia in newborns at a tertiary care NICU of northern India: A quality improvement study,” *J. Neonatal. Perinatal. Med.*, vol. 14, no. 2, pp. 277–286, 2021, doi: 10.3233/NPM-190385.
- [2] J. M. Perlman *et al.*, *Part 7: Neonatal resuscitation: 2015 International Consensus on cardiopulmonary resuscitation and emergency cardiovascular care science with treatment recommendations*, vol. 132. Circulation, 2015.
- [3] K. Lunze, D. E. Bloom, D. T. Jamison, and D. H. Hamer, “The global burden of neonatal hypothermia: Systematic review of a major challenge for newborn survival,” *BMC Med.*, vol. 11, no. 1, 2013, doi: 10.1186/1741-7015-11-24.
- [4] P. N. Suman Rao, R. Udani, and R. Nanavati, “Kangaroo Mother Care for Low Birth Weight Infants: A Randomized Controlled Trial,” *Indian Pediatr.*, vol. 45, pp. 17–23, 2008.
- [5] E. M. Mccall, F. Alderdice, H. L. Halliday, S. Vohra, and L. Johnston, “Interventions to prevent hypothermia at birth in preterm and/or low birth weight infants (Review),” *Cochrane Database Syst. Rev.*, vol. 2018, no. 2, 2018, doi: 10.1002/14651858.CD004210.pub5.
- [6] World Health Organization. *WHO compendium of innovative health technologies for low resource settings, 2011-2014: assistive devices, eHealth solutions, medical devices, other technologies, technologies for outbreaks*. World Health Organization, 2015.
- [7] R. B. Knobel, D. Holditch-Davis, T. A. Schwartz, and J. E. Wimmer, “Extremely low birth weight preterm infants lack vasomotor response in relationship to cold body temperatures at birth,” *J. Perinatol.*, vol. 29, no. 12, pp. 814–821, 2009, doi: 10.1038/jp.2009.99.
- [8] K. Cramer, N. Wiebe, L. Hartling, E. Crumley, and S. Vohra, “Heat loss prevention: A systematic review of occlusive skin wrap for premature neonates,” *J. Perinatol.*, vol. 25, no. 12, pp. 763–769, 2005, doi: 10.1038/sj.jp.7211392.
- [9] D. S. Sousa *et al.*, “Morbidade em recém-nascidos prematuros de extremo baixo peso em unidade de terapia intensiva neonatal,” *Rev. Bras. Saude Matern. Infant.*, vol. 17, no. 1, pp. 139–147, 2017, doi 10.1590/1806-93042017000100008.
- [10] M. F. B. De Almeida *et al.*, “Hypothermia and early neonatal mortality in preterm infants,” *J. Pediatr.*, vol. 164, no. 2, pp. 271–276, 2014, doi: 10.1016/j.jpeds.2013.09.049.
- [11] A. R. Laptok *et al.*, “Admission Temperature and Associated Mortality and Morbidity among Moderately and Extremely Preterm Infants,” *J. Pediatr.*, vol. 192, pp. 53–59.e2, 2018, doi: 10.1016/j.jpeds.2017.09.021.

- [12] F. Ahmed, A. Sufyan, S. Hussain, A. Rehman, S. Amin and Y. Salam, "Smart Baby Incubator," *2021 International Conference on Computing, Electronic and Electrical Engineering (ICE Cube)*, pp. 1-5, 2021, doi: 10.1109/ICECube53880.2021.9628245.
- [13] F. M. Vitale, G. Chirico, and C. Lentini, "Sensory stimulation in the NICU environment: Devices, systems, and procedures to protect and stimulate premature babies," *Children*, vol. 8, no. 5, p. 334, 2021.
- [14] W. Widhiada, I. N. G. Antara, I. N. Budiarsa, and I. M. G. Karohika, "The Robust PID Control System of Temperature Stability and Humidity on Infant Incubator Based on Arduino at Mega 2560," *IOP Conf. Ser. Earth Environ. Sci.*, vol. 248, no. 1, 2019, doi: 10.1088/1755-1315/248/1/012046.
- [15] S. Y. Setiawan, D. H. Andayani, A. Pudji, L. Soetjiatie, and A. B. A. Kusuma, "Analysis Of Baby Incubator Humidity Based PID with Kangaroo Mode," *Journal of Electronics, Electromedical Engineering, and Medical Informatics*, vol. 4, no. 1, pp. 50-54, 2022.
- [16] I. Sharma and M. Singh, "Infant Warmer Design with PID Control for Stability and Equal Temperature Distribution Equipped with Digital Scales for Prevention of Hypothermia in Newborns," *Int. J. Adv. Heal. Sci. Technol.*, vol. 1, no. 1, pp. 7-13, 2021, doi: 10.35882/ijahst.v1i1.2.
- [17] A. Alimuddin, R. Arafiyah, I. Saraswati, R. Alfanz, P. Hasudungan, and T. Taufik, "Development and performance study of temperature and humidity regulator in baby incubator using fuzzy-pid hybrid controller," *Energies*, vol. 14, no. 20, p. 6505, 2021.
- [18] A. B. Fakhri, S. K. Gharghan, and S. L. Zubaidi, "Accurate Infants Remote Temperature Monitoring System based on Contactless Temperature Sensor and GSM Network," *2020 13th International Conference on Developments in eSystems Engineering (DeSE)*, pp. 177-182, 2020, doi: 10.1109/DeSE51703.2020.9450733.
- [19] M. E. Wieler, T. G. Murphy, M. Blecherman, H. Mehta, and G. J. Bender, "Infant heart-rate measurement and oxygen desaturation detection with a digital video camera using imaging photoplethysmography," *J. Perinatol.*, vol. 41, no. 7, pp. 1725-1731, 2021, doi: 10.1038/s41372-021-00967-1.
- [20] B. G. Irianto, A. M. Maghfiroh, M. Sofie, and A. Kholiq, "Baby Incubator with Overshoot Reduction System using PID Control Equipped with Heart Rate Monitoring Based on Internet of Things," *Int. J. Technol.*, vol. 14, no. 4, p. 811, 2023, doi: 10.14716/ijtech.v14i4.5678.
- [21] S. F. Memon, M. Memon, and S. Bhatti, "Wearable technology for infant health monitoring: a survey," *IET Circuits, Devices & Systems*, vol. 14, no. 2, pp. 115-129, 2020.
- [22] N. H. Wijaya, F. A. Fauzi, E. T. Helmy, P. T. Nguyen, and R. A. Atmoko, "The design of heart rate detector and body temperature measurement device using ATmega16," *J. Robot. Control*, vol. 1, no. 2, pp. 40-43, 2020, doi: 10.18196/jrc.1209.
- [23] J. Jalinas, W. K. Raharja, and B. P. E. Wijaya, "Design of Monitoring Tool Heartbeat Rate and Human Body Temperature Based on WEB," *MATEC Web Conf.*, vol. 164, pp. 1-19, 2018, doi: 10.1051/mateconf/201816401017.
- [24] F. N. Aisyah, K. Devara, N. R. Poespawati, and R. W. Purnamaningsih, "The design of stethoscope-based heart rate monitoring device for infant incubator application," in *AIP Conference Proceedings*, vol. 2092, no. 1, 2019.
- [25] M. S. A. Nampira, A. Kholiq, and L. Lamidi, "A Modification of Infant Warmer with Monitoring of Oxygen Saturation, Heart Rate and Skin Temperature," *J. Electron. Electromed. Eng. Med. Informatics*, vol. 3, no. 1, pp. 19-25, 2021, doi: 10.35882/jeeemi.v3i1.4.
- [26] J. Muralidharan, S. Sharumathi, A. Sivasudhan, K. Yamini, and K. Sathishkumar, "Detecting the Oxygen Saturation level and Heart Rate using MAX30100 Sensor," *2023 2nd International Conference on Vision Towards Emerging Trends in Communication and Networking Technologies (ViTECoN)*, pp. 1-5, 2023, doi: 10.1109/ViTECoN58111.2023.10157171.
- [27] P. C. Nugraha, M. R. Mak'rif, Lusiana, and S. Luthfiyah, "Long Distance Dual SpO2 Monitoring in Premature Babies Via Bluetooth Communication," *J. Electron. Electromed. Eng. Med. Informatics*, vol. 3, no. 2, pp. 106-110, 2021, doi: 10.35882/jeeemi.v3i2.7.
- [28] W. Shalannanda, I. Zakia, F. Fahmi, and E. Sutanto, "Implementation of the Hardware Module of IoT-based Infant Incubator Monitoring System," *2020 14th International Conference on Telecommunication Systems, Services, and Applications (TSSA)*, pp. 1-5, 2020, doi: 10.1109/TSSA51342.2020.9310901.
- [29] E. A. Suprayitno, M. R. Marlianto, and M. I. Mauliana, "Measurement device for detecting oxygen saturation in blood, heart rate, and temperature of the human body," *J. Phys. Conf. Ser.*, vol. 1402, no. 3, p. 033110, 2019, doi: 10.1088/1742-6596/1402/3/033110.
- [30] C. H. Huang and J. W. Guo, "Design of Reflectance Pulse Oximeter and BPM using the Max30100 Sensor in Early Detection of Hypoxemia in Patients with Cardiovascular Disorders," *Int. J. Adv. Heal. Sci. Technol.*, vol. 1, no. 1, pp. 1-6, 2021, doi: 10.35882/ijahst.v1i1.1.
- [31] N. N. Sari, M. N. Gani, R. A. M. Yusuf, and R. Fernando, "Telemedicine for silent hypoxia: Improving the reliability and accuracy of Max30100-based system," *Indones. J. Electr. Eng. Comput. Sci.*, vol. 22, no. 3, pp. 1419-1426, 2021, doi: 10.11591/ijeecs.v22.i3.pp1419-1426.
- [32] A. J. Puspitasari, D. Famella, M. S. Ridwan, and M. Khoiri, "Design of low-flow oxygen monitor and control system for respiration and SpO2 rates optimization," *J. Phys. Conf. Ser.*, vol. 1436, no. 1, pp. 1-9, 2020, doi: 10.1088/1742-6596/1436/1/012042.
- [33] L. Lamidi, A. Kholiq, and M. Ali, "A Low-Cost Baby Incubator Design Equipped with Vital Sign Parameters," *Indones. J. Electron. Electromed. Eng. Med. Informatics*, vol. 3, no. 2, pp. 53-58, 2021, doi: 10.35882/ijeemi.v3i2.3.
- [34] A. M. Maghfiroh, F. Amrinsani, R. M. Firmansyah, and S. Misra, "Infant Warmer with Digital Scales for Auto Adjustment PID Control Parameters," *Teknokes J.*, vol. 15, no. 2, pp. 117-123, 2022, doi: 10.35882/jteknokes.v15i2.246.
- [35] A. Majid, E. D. Setioningsih, A. Kholiq, S. Y. Setiawan, and A. Suthar, "Comparative Analysis of PID and Fuzzy Temperature Control System on Infant Warmer," *J. Electron. Electromed. Eng. Med. Informatics*, vol. 4, no. 4, 2022, doi: 10.35882/jeeemi.v4i4.257.
- [36] D. R. Ningtias, B. Wahyudi, and I. T. Harsoyo, "Temperature Monitoring on Infant Warmer Using Arduino-based INCU Analyzer," *Elektr. J.*, vol. 13, no. 1, pp. 22-25, 2021, doi: 10.26623/elektrika.v13i1.3118.
- [37] I. Sharma and M. Singh, "Infant Warmer Design with PID Control for Stability and Equal Temperature Distribution Equipped with Digital Scales for Prevention of Hypothermia in Newborns," *International Journal of Advanced Health Science and Technology*, vol. 1, no. 1, 7-13, 2021.
- [38] S. Luthfiyah, F. Kristya, I. D. G. H. Wisana, and M. Thaseen, "Baby Incubator Monitoring Center for Temperature and Humidity using WiFi Network," *J. Electron. Electromed. Eng. Med. Informatics*, vol. 3, no. 1, pp. 8-13, 2021, doi: 10.35882/jeeemi.v3i1.2.
- [39] A. Kholiq and L. Lamidi, "Analysis of Temperature on Baby Incubator Control System," *Journal of Biomimetics, Biomaterials and Biomedical Engineering*, vol. 50, pp. 103-111, 2021.
- [40] M. M. Rahman and M. S. Islam, "Design of a Fuzzy Based Pid Algorithm for Temperature Control of An Incubator," in *Journal of Physics: Conference Series*, vol. 1969, no. 1, p. 012055, 2021.
- [41] A. Marwanto, K. Sunriyadi, and S. Alifah, "Fuzzy Logic Implementation For Incubator Prototype With Temperature And Humidity Control," *2019 6th International Conference on Electrical Engineering, Computer Science and Informatics (EECSI)*, pp. 71-74, 2019, doi: 10.23919/EECSI48112.2019.8976917.
- [42] M. Shaib, M. Rashid, L. Hamawy, M. Arnout, I. E. Majzoub and A. J. Zaylaa, "Advanced portable preterm baby incubator," *2017 Fourth International Conference on Advances in Biomedical Engineering (ICABME)*, pp. 1-4, 2017, doi: 10.1109/ICABME.2017.8167522.
- [43] V. N. Azkiyak, S. Syaifudin, and D. Titisari, "Incubator Analyzer Using Bluetooth Android Display (Humidity & Air Flow)," *J. Electron. Electromed. Eng. Med. Informatics*, vol. 1, no. 2, pp. 71-77, 2020, doi: 10.35882/ijeemi.v1i2.5.
- [44] A. Hannouch, T. Lemenand, K. Houry, and C. Habchi, "Heat and mass-transfer of preterm neonates nursed inside incubators - A review," *Therm. Sci. Eng. Prog.*, vol. 18, p. 100553, 2020.
- [45] A. R. Shabaan, S. M. El-Metwally, M. M. A. Farghaly, and A. A. Sharawi, "PID and fuzzy logic optimized control for temperature in infant incubators," *2013 5th International Conference on Modelling, Identification and Control (ICMIC)*, pp. 53-59, 2013.
- [46] S. Sendra, P. Romero-Díaz, J. Navarro-Ortiz, and J. Lloret, "Smart Infant Incubator Based on LoRa Networks," *2018 IEEE/ACS 15th International Conference on Computer Systems and Applications*

- (AICCSA), pp. 1-6, 2018, doi: 10.1109/AICCSA.2018.8612863.
- [47] A. G. Shabeeb, A. J. Al-Askery, and Z. M. Nahi, "Remote monitoring of a premature infants incubator," *Indones. J. Electr. Eng. Comput. Sci.*, vol. 17, no. 3, pp. 1232-1238, 2020, doi: 10.11591/ijeecs.v17.i3.pp1232-1238.
- [48] D. N. F. Mohamad Ishak, M. M. Abdul Jamil, and R. Ambar, "Arduino Based Infant Monitoring System," *IOP Conf. Ser. Mater. Sci. Eng.*, vol. 226, no. 1, p. 012095, 2017, doi: 10.1088/1757-899X/226/1/012095.
- [49] B. Ashish, "Temperature monitored IoT based smart incubator," *2017 International Conference on I-SMAC (IoT in Social, Mobile, Analytics and Cloud) (I-SMAC)*, pp. 497-501, 2017, doi: 10.1109/I-SMAC.2017.8058400.
- [50] S. S. M. Sheet, Z. G. Mohammed, K. N. Khaleel, and A. A. Abbas, "Smart Infant Incubator Based On Mega Microcontroller," *2019 2nd International Conference on Engineering Technology and its Applications (IICETA)*, pp. 1-6, 2019, doi: 10.1109/IICETA47481.2019.9013004.
- [51] M. Koli, P. Ladge, B. Prasad, R. Boria, and N. J. Balur, "Intelligent Baby Incubator," *2018 Second International Conference on Electronics, Communication and Aerospace Technology (ICECA)*, pp. 1036-1042, 2018, doi: 10.1109/ICECA.2018.8474763.
- [52] M. Ali, M. Abdelwahab, S. Awadekreim, and S. Abdalla, "Development of a Monitoring and Control System of Infant Incubator," *2018 International Conference on Computer, Control, Electrical, and Electronics Engineering (ICCCEEE)*, pp. 1-4, 2018, doi: 10.1109/ICCCEEE.2018.8515785.
- [53] P. T. Kapen, Y. Mohamadou, F. Momo, D. K. Jauspin, N. Kanmagne, and D. D. Jordan, "Development of a neonatal incubator with phototherapy, biometric fingerprint reader, remote monitoring, and heart rate control adapted for developing countries hospitals," *Journal of Neonatal Nursing*, vol. 25, no. 6, pp. 298-303, 2019, doi: 10.1016/j.jnn.2019.07.011.
- [54] M. Mamun, "A Wireless Based Temperature, Humidity and Light Intensity Monitoring System for Child Incubators," *Int. J. Eng. Trends Appl.*, vol. 2, no. 3, pp. 67-71, 2015.
- [55] A. S. Go *et al.*, "Heart disease and stroke statistics—2014 update: a report from the American Heart Association," *circulation*, vol. 129, no. 3, pp. e28-e292, 2014.
- [56] L. Agustine, I. Muljono, P. R. Angka, A. Gunadhi, D. Lestariningsih, and W. A. Weliamto, "Heart Rate Monitoring Device for Arrhythmia Using Pulse Oximeter Sensor Based on Android," *2018 International Conference on Computer Engineering, Network and Intelligent Multimedia (CENIM)*, pp. 106-111, 2018, doi: 10.1109/CENIM.2018.8711120.
- [57] A. Guber, G. Epstein Shochet, S. Kohn, and D. Shitrit, "Wrist-Sensor Pulse Oximeter Enables Prolonged Patient Monitoring in Chronic Lung Diseases," *J. Med. Syst.*, vol. 43, pp. 1-7, 2019, doi: 10.1007/s10916-019-1317-2.
- [58] B. Annapurna, A. Manda, A. C. Raj, R. Indira, S. P. Kumari, and V. Nagalakshmi, "Max 30100/30102 Sensor Implementation to Viral Infection Detection Based On Spo2 and Heartbeat Pattern," *Ann. Rom. Soc. Cell Biol.*, vol. 25, no. 2, pp. 2053-2061, 2021.
- [59] M. A. Yusof and Y. Wen Hau, "Mini Home-Based Vital Sign Monitor with Android Mobile Application (myVitalGear)," *2018 IEEE-EMBS Conference on Biomedical Engineering and Sciences (IECBES)*, pp. 150-155, 2018, doi: 10.1109/IECBES.2018.8626639.
- [60] S. S. Al-Majeed, I. S. Al-Mejibli, and J. Karam, "Home telehealth by Internet of Things (IoT)," *2015 IEEE 28th Canadian Conference on Electrical and Computer Engineering (CCECE)*, pp. 609-613, 2015, doi: 10.1109/CCECE.2015.7129344.
- [61] M. S. Rahman, N. C. Peeri, N. Shrestha, R. Zaki, U. Haque, and S. H. Ab Hamid, "Defending against the Novel Coronavirus (COVID-19) outbreak: How can the Internet of Things (IoT) help to save the world?," *Health policy and technology*, vol. 9, no. 2, pp. 136-138, 2020, doi: 10.1016/j.hlpt.2020.04.005.
- [62] J. Wan *et al.*, "Wearable IoT enabled real-time health monitoring system," *Eurasip J. Wirel. Commun. Netw.*, vol. 2018, no. 1, pp. 1-10, 2018, doi: 10.1186/s13638-018-1308-x.
- [63] E. Christaki, "New technologies in predicting, preventing and controlling emerging infectious diseases," *Virulence*, vol. 6, no. 6, pp. 558-565, 2015, doi: 10.1080/21505594.2015.1040975.
- [64] J. Wan, M. Li, M. J. O'Grady, X. Gu, M. A. A. H. Alawlaqi, and G. M. P. O'Hare, "Time-Bounded Activity Recognition for Ambient Assisted Living," in *IEEE Transactions on Emerging Topics in Computing*, vol. 9, no. 1, pp. 471-483, 2021, doi: 10.1109/TETC.2018.2870047.